

SPECIFICATIONS

615E
625E
635E
DIMENSIONS WITH STANDARD TIRES

LENGTH	8 460 mm (333 in)	8 740 mm (344 in)	9 475 mm (373 in)
WHEELBASE	4 320 mm (170 in)	4 445 mm (175 in)	5 230 mm (206 in)
WIDTH	3 350 mm (132 in)	3 350 mm (132 in)	3 350 mm (132 in)
WIDTH narrow offset	N/A	N/A	3 125 mm (123 in)
HEIGHT	3 150 mm (124 in)	3 150 mm (124 in)	3 225 mm (127 in)
GROUND CLEARANCE	635 mm (25 in)	635 mm (25 in)	710 mm (28 in)
WEIGHT	20 855 kg (46,000 lb)	21 860 kg (48,200 lb)	24 040 kg (53,000 lb)

POWER

ENGINE Tier 4f	Tigercat FPT N67 Tier 4f	Tigercat FPT N67 Tier 4f	Tigercat FPT N67 Tier 4f
▶ RATED	151 kW (203 hp) @ 2,200 rpm	165 kW (221 hp) @ 2,200 rpm	195 kW (262 hp) @ 2,200 rpm
▶ PEAK	165 kW (221 hp) @ 1,900 rpm	172 kW (231 hp) @ 2,000 rpm	201 kW (270 hp) @ 2,000 rpm
ENGINE Tier 2	Tigercat FPT N67 Tier 2	Tigercat FPT N67 Tier 2	Tigercat FPT N67 Tier 2
▶ RATED	168 kW (226 hp) @ 2,100 rpm	168 kW (226 hp) @ 2,100 rpm	198 kW (266 hp) @ 2,100 rpm
▶ PEAK	172 kW (231 hp) @ 1,900 rpm	172 kW (231 hp) @ 1,900 rpm	201 kW (270 hp) @ 2,000 rpm
AIR FILTRATION	Precleaner and 2-stage engine air cleaner	Precleaner and 2-stage engine air cleaner	Precleaner and 2-stage engine air cleaner
TOP SPEED	21 km/h (13 mph) with EHS®	21 km/h (13 mph) with EHS®	14 km/h (9 mph)
COOLING	Side-by-side aluminum radiator, oil cooler, charge air cooler and A/C condenser	Side-by-side aluminum radiator, oil cooler, charge air cooler and A/C condenser	Side-by-side aluminum radiator, oil cooler, charge air cooler and A/C condenser
FAN	Engine driven blower	Engine driven blower	Flexxaire® variable pitch, reversing
▶ Optional	Flexxaire® variable pitch, reversing	Flexxaire® variable pitch, reversing	N/A
FUEL CAPACITY usable	305 L (81 US gal)	305 L (81 US gal)	305 L (81 US gal)
▶ Optional	430 L (110 US gal)	430 L (110 US gal)	430 L (110 US gal)
DEF CAPACITY Tier 4f	43 L (11 US gal)	43 L (11 US gal)	43 L (11 US gal)

POWER TRAIN

TRANSMISSION	EHS® (efficient high speed) drive Single-speed mechanical Variable speed hydrostatic (2) variable displacement motors	Single-speed mechanical Variable speed hydrostatic (2) variable displacement motors	Single-speed mechanical Variable speed hydrostatic (2) variable displacement motors
▶ Optional	Single-speed mechanical Variable speed hydrostatic (2) variable displacement motors	EHS® (efficient high speed) drive Single-speed mechanical Variable speed hydrostatic (2) variable displacement motors	N/A
AXLE, FRONT	Tigercat IB17, inboard planetary, barrel differential, +/-15° oscillation	Tigercat IB17, inboard planetary, barrel differential, +/-15° oscillation	Tigercat OB17, outboard planetary, barrel differential, +/-15° oscillation
▶ Optional	Tigercat OB17, outboard planetary, barrel differential, +/-15° oscillation	Tigercat OB17, outboard planetary, barrel differential, +/-15° oscillation	N/A
AXLE, REAR	Tigercat ROB17 bogie, 14 hole pattern, outboard planetary, barrel differential	Tigercat ROB17 bogie, 14 hole pattern, outboard planetary, barrel differential	Tigercat WOF17 wide-spread bogie, outboard planetary, flange differential
▶ Optional	Tigercat ROB17 bogie, 18 hole pattern, outboard planetary, barrel differential	Tigercat ROB17 bogie, 18 hole pattern, outboard planetary, barrel differential	Tigercat HOF17 high-clearance bogie, outboard planetary, flange differential
DIFFERENTIAL LOCKS	Independent front and rear	Independent front and rear	Independent front and rear

HYDRAULIC SYSTEM

PUMP, DRIVE	Piston	Piston	Piston
PUMP, MAIN 1	Piston for all machine functions	Piston for all machine functions	Piston for all machine functions
PUMP, MAIN 2	Gear for cooling	Gear for cooling	Gear for cooling
FILTRATION	(2) spin-on, 7 micron full flow	(2) spin-on, 7 micron full flow	(2) spin-on, 7 micron full flow
CYLINDERS, ARCH	(4) 90 mm (4 in) bore (dual function)	(4) 90 mm (4 in) bore (dual function)	(4) 115 mm (4.5 in) bore (dual function)
CYLINDERS, STEER	(2) 85 mm (3.25 in) bore	(2) 85 mm (3.25 in) bore	(2) 85 mm (3.25 in) bore
CYLINDERS, BLADE	(2) 75 mm (3.5 in) bore	(2) 75 mm (3.5 in) bore	(2) 90 mm (3.5 in) bore
RESERVOIR	105 L (28 US gal)	105 L (28 US gal)	105 L (28 US gal)

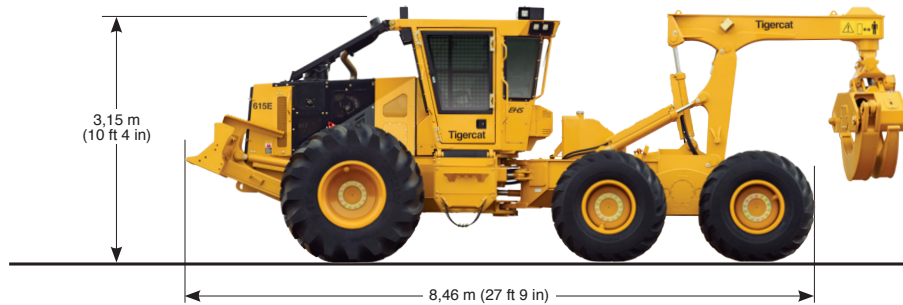
BRAKES

DYNAMIC BRAKING	Hydrostatic	Hydrostatic	Hydrostatic
SECONDARY BRAKES	Enclosed, oil cooled	Enclosed, oil cooled	Enclosed, oil cooled
PARK BRAKE	Caliper; Spring applied, hydraulic release	Caliper; Spring applied, hydraulic release	Caliper; Spring applied, hydraulic release

615E
625E
635E

TIRES			
FRONT	30.5Lx32,20	30.5Lx32,20	35.5Lx32,24
REAR	780/50x28.5	780/50x28.5	30.5Lx32,26
► Optional	N/A	N/A	780/50x28.5
ARCH			
STANDARD	Dual function, continuous rotate	Dual function, continuous rotate	Dual function, high lift, continuous rotate
GRAPPLE			
STANDARD	Tigercat 1,58 m ² (17 ft ²) 2-cylinder, plate or box tong	Tigercat 1,58 m ² (17 ft ²) 2-cylinder, plate or box tong	Tigercat 1,95 m ² (21 ft ²) 2-cylinder, plate or box tong
► MAXIMUM OPENING	3 630 mm (143 in)	3 630 mm (143 in)	3 810 mm (150 in)
OPTIONAL	Tigercat 1,76 m ² (19 ft ²) 2-cylinder, plate or box tong	Tigercat 1,76 m ² (19 ft ²) 2-cylinder, plate or box tong Tigercat 1,95 m ² (21 ft ²) 2-cylinder, plate or box tong	Tigercat 2,32 m ² (25 ft ²) 2-cylinder, plate or box tong
► MAXIMUM OPENING	3 683 mm (145 in)	3 683 mm (145 in) 3 810 mm (150 in)	3 835 mm (151 in)
BLADE			
WIDTH	2 285 mm (90 in)	2 285 mm (90 in)	2 285 mm (90 in)
► With optional extensions	2 920 mm (115 in)	2 920 mm (115 in)	2 920 mm (115 in)
ELECTRICAL			
BATTERY	(2) 12 v	(2) 12 v	(2) 12 v
ALTERNATOR	80 amp, 24 v	80 amp, 24 v	80 amp, 24 v
SYSTEM VOLTAGE	24 v	24 v	24 v
OPERATOR'S STATION			
CAB	Insulated, pressurized and isolation mounted; A/C, heater, defroster and pressurizer; (2) doors with slide side windows and hinged screens; Forward sloping windshield; Machine monitoring system with LCD display; AM/FM digital stereo CD		
SEAT	Extreme duty Turnaround®, air ride; Fully adjustable height, seat back recline, lumbar support and armrests; 2-position mechanical lock, 100° rotating for rear-facing drive, heated and cooled		
OPERATOR CONTROLS	Electronic joystick for arch/grapple/blade/steering; Electronic foot pedal, front and rear with forward/reverse selector switch for drive; Electronic control system with colour display screen interface for machine monitoring and function adjustment		
OTHER STANDARD EQUIPMENT			
	Alarm for reverse drive; Fuel suction strainer; Fire extinguisher; Pressurized water system		
OPTIONAL EQUIPMENT			
	Hydraulic winch; LED lighting package; High output LED lighting package; Cold weather kit; CB radio		

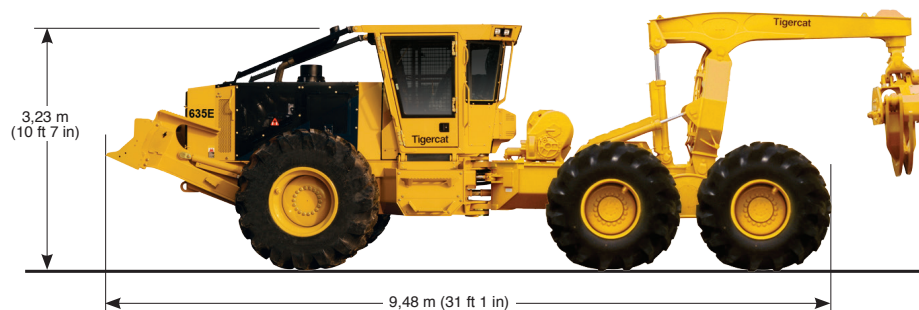
THE 615E



THE 625E



THE 635E



EMAIL	comments@tigercat.com
PHONE	519.753.2000
WEBSITE	www.tigercat.com
ADDRESS	54 Morton Ave. East, Brantford, Ontario Canada, N3R 7J7
MAIL	Box 637 N3T 5P9

© 2001 - 2016 Tigercat International Inc. All Rights Reserved. TIGERCAT, WIDERANGE, TURNAROUND, ER, EHS, and TEC, their respective logos, TOUGH RELIABLE PRODUCTIVE, TIGERCAT TV, "Tigercat Orange" and BETWEEN THE BRANCHES, as well as corporate and product identity, are trademarks of Tigercat International Inc., and may not be used without permission. TIGERCAT, TURNAROUND, WIDERANGE and ER, and their respective logos are registered trademarks of Tigercat International Inc.